

Uninterruptible Power Systems

Active

Models

700 VA
1,000 VA
1,500 VA
2,000 VA
3,000 VA



CHLORIDE
POWER PROTECTION



Features

True On-Line Double Conversion Protection
Tower/Rack Universal Design (2U form factor)
Internal Automatic Bypass
Advanced Battery Management with Automatic battery test & deep discharge Protection.
Hot Swappable Batteries
Extended Battery Options
User Controllable Outlets
Two-Year Warranty

Options

MopUPS Monitoring & Shutdown Software
ManageUPSNET SNMP Adapter
Isolated Contacts Interface Card

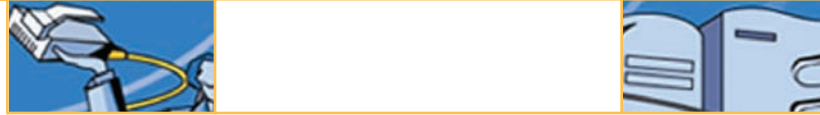
Specifications

Two Modules Available
120V In/Out, 208V In/Out
Input frequency: 50/60Hz, auto-select, $\pm 5\%$

Compliance

UL / cUL listed to UL 1778

Chloride's Active provides superior, cost-effective power protection for PCs, workstations and small servers.



Performance and Physical Data

MODELS	A0K7XAU	A1K0XAU	A1K5XAU	A2K0XAU	A3K0XAU	A2K0XHU	A3K0XHU
Capacity (VA/ W)	700 / 490	1000 / 700	1500 / 1050	2000 / 1400	3000 / 2100	2000 / 1400	3000 / 2100
Technology	On-Line Double Conversion						
Input voltage (V)	1 Phase, 120V					1 Phase, 208V	
Input frequency	Auto-select 50/60Hz +/- 5%						
Input Connection	NEMA 5-15P	NEMA 5-15P	NEMA 5-15P	NEMA L5-20P	NEMA L5-30P	IEC320 w/L6-20P	IEC320 w/ L6-30P
Output voltage (V)	1 Phase, Sine wave 100V/ 120V/ 127V					1 Phase, Sine wave 200V / 208V/ 220V / 230V / 240V	
Output Frequency (Hz)	50 / 60Hz +/- 0.5%, Frequency Converter						
Output current (A)	5.8 @ 120V	8.3 @ 120V	12.5 @ 120V	16.6 @ 120V	25 @ 120V	8.7 @ 208V	13 @ 208V
Output Overload Rating	< 110% warning, 110% - 130% for 12 s then switches to bypass, >130% for 1.5 s then switches to bypass						
Output Connection receptacles	6 x NEMA 5-15R	6 x NEMA 5-15R	6 x NEMA 5-20R	1 x NEMA L5-20R, 2 x NEMA 5-20R	1 x NEMA L5-30R, 2 x NEMA	4 x IEC320-10A	2 x IEC320-10A 1 x IEC-320-16A
Programmable Output Connection receptacles	2 x NEMA 5-15R	2 x NEMA 5-15R	2 x NEMA 5-20R	2 x NEMA 5-20R	2 x NEMA 5-20R	2 X IEC-10A	2 X IEC-10A
Typical Battery runtime @ linear load (minutes)	Half / Full load	Half / Full load	Half / Full load	Half / Full load	Half / Full load	Half / Full load	Half / Full load
Internal	27 / 11	19 / 6	13 / 5	16 / 7	14 / 5	16 / 7	14 / 5
Internal +1 EXB	110 / 50	76 / 32	52 / 19	86 / 44	57 / 23	86 / 44	57 / 23
Internal +2 EXB	228 / 93	152 / 59	103 / 33	171 / 61	114 / 58	171 / 61	114 / 58
Internal +3 EXB	328 / 148	228 / 93	157 / 54	285 / 90	171 / 90	285 / 90	171 / 90
Internal +4 EXB	450 / 200	323 / 126	218 / 74	404 / 135	247 / 124	404 / 135	247 / 124
Communication Ports							
Standard ports	1 x USB port + 1 x Serial port						
Options ports	Compatible with Chloride accessory cards						
Remote EPO	Standard						
Dimensions							
Mounting Style	19" / 2U Rack / Tower						
UPS (W x H x D) inches	17.1 x 3.4 x 17.7			17.1 x 3.4 x 25.8			
External battery pack (W x H x D) inches	17.1 x 3.4 x 17.7			17.1 x 3.4 x 25.8			
UPS weight w/ integrated battery (Lbs)	56	60	60	85	86	85	86
Environmental							
Operating temperature	32°F - 104°F (0°C - 40°C), recommended 50°F - 77°F (10°C - 25°C)						
Relative humidity	20% - 90%, non-condensing						
Heat dissipation (max) BTU/hr	275	390	584	1004	1158	810	1158
Acoustic noise @ 3.2ft	45dBA Max			48dBA Max		48dBA Max	

* Adapter cords available.