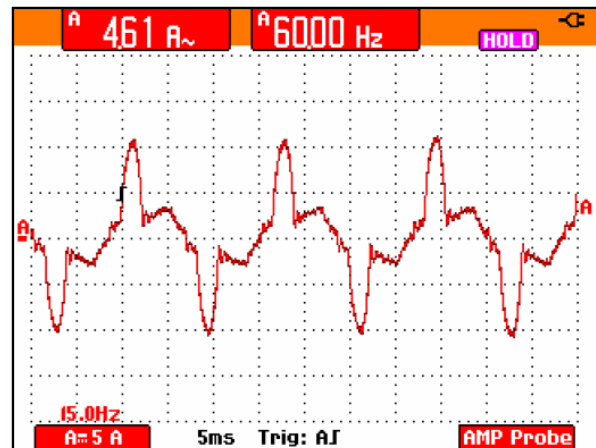
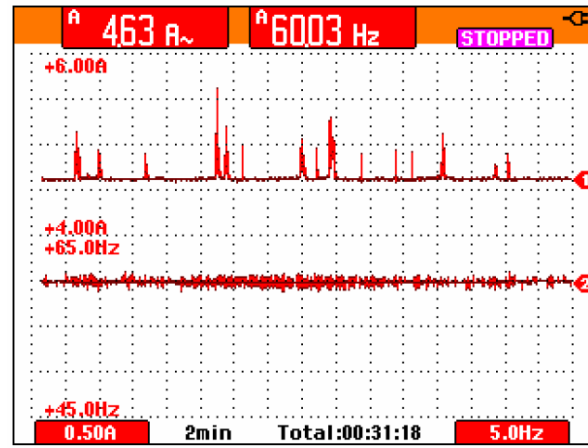


“Mac Victor® Power Network” – Case Study

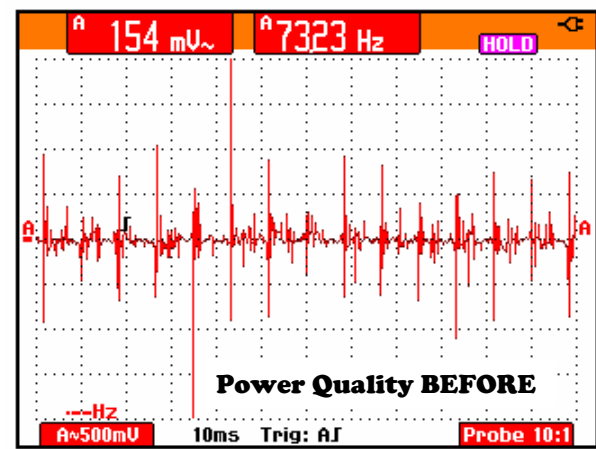
Texas Steakhouse & Saloon® – Fredericksburg, VA (installed Sept, 2004)



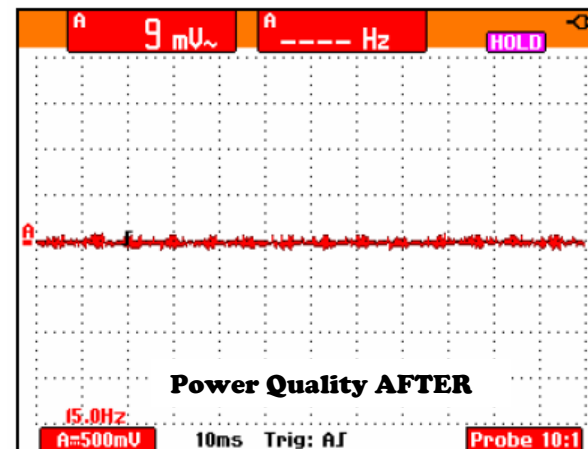
Texas Steak House-Fredericksburg, VA "Snap shot" view of the steady state amp load (4.61 amps) on the entire P.O.S. system "power network".



Texas Steak House-Fredericksburg, VA 30 minute trend log of intermittent amp load on the entire P.O.S. system "power network". Spikes are printers which never exceeded 5.7 amps total.



Texas Steak House-Fredericksburg, VA COMMON MODE (CM = neutral to ground) voltage at the end receptacle of the power network = 4.0V WITHOUT MVPN. (Clean Power = CM less than 0.5V peak to peak)



Texas Steak House-Fredericksburg, VA COMMON MODE (CM = neutral to ground) voltage at the end receptacle of the power network = 0.2V. (Clean Power = CM less than 0.5V peak to peak)

RESULT: Total P.O.S. load = 4.6 amps steady state / 5.7 amps maximum with printers operating. System capacity = 12 amps. (only 38% loaded)

RESULT: P.O.S. System run time during continuous power failure is about 25 minutes with 20% battery capacity remaining.

RESULT: Power Quality at the end of network receptacle is excellent.

The oscilloscope used to measure the amp loads on the MVPN and the quality of power at the end of the electrical power network (bar printer) was a Fluke 196C Color Scopemeter.

“Mac Victor® Power Network” – Case Study



Texas Steakhouse & Saloon® – Fredericksburg, VA

(Copyright of Boddie Noell Enterprises – Rocky Mount, NC)

The “Mac Victor® Power Network” (MVPN) was installed at this facility in September, 2004 to supply a separate and high quality electrical power network for the entire P.O.S. system. This was a new restaurant construction project located at 1901 Carl Silver Parkway in Fredericksburg, VA.

The MVPN provides a unique and hybrid approach to supplying clean and continuous power (battery back up) for all the Critical Electronic Systems in a local network. In this application, the connected P.O.S. equipment includes:

- 1 – IBM Back Office Server, modem, and hub
- 7 – NCR P.O.S. Terminals
- 11 – Epson Receipt Printers

Texas Steakhouse & Saloon® – Fredericksburg, VA

(Installed September, 2004)



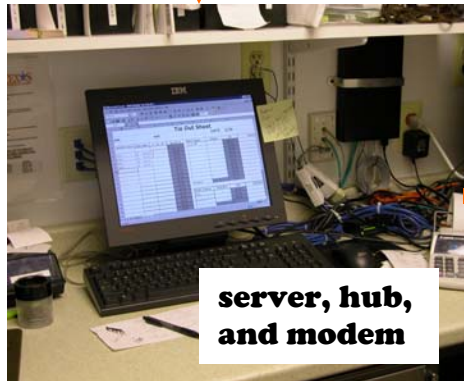
kitchen printers (2)



serving POS and printers (3)



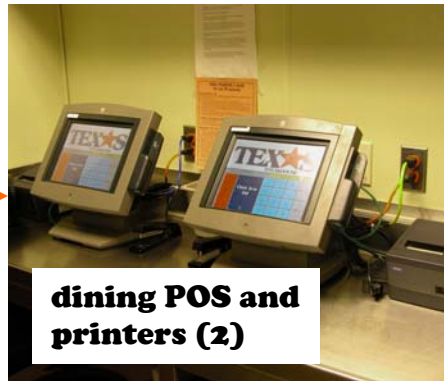
kitchen printer (1)



server, hub, and modem



take out POS and printer (1)



dining POS and printers (2)



bar printer (1)



bar POS and printer (1)

“Mac Victor® Power Network”



Newly Derived Isolated Ground (NDIG)

This technology eliminates unnecessary breakers and / or electrical panels and the obsolete dedicated isolated circuits for critical networks

Up to four (4) “Power Trunk” wiring runs to all the parallel Isolated Ground (IG) receptacles-

- * Line
- * Neutral
- * Ground
- * Isolated Gnd

Critical Product Benefits

Expand Your Power® with the “Mac Victor® Power Network”

- The “Mac Victor® Power Network” (Patent Pending) is a unique and fully integrated electrical power system for your most critical electronic networks.
- Provides a dedicated, isolated power source for critical electronic networks with the “Newly Derived Isolated Ground” (NDIG) technology for direct wiring to remote Isolated Ground (IG) receptacles and hard wired control panels.
- Provides clean and continuous, single phase, electrical power and minimizes data communication problems associated with the “multiple-phasing” of network power.
- Reduces both operating and maintenance expenses from downtime due to software lockups and hardware failures.
- Increases revenues with continuous system operation during power failures and other power quality disturbances.
- Easy to override with “make before break” bypass technology for emergencies.
- Input and output power pilot lights for status indication and diagnosis.

P.O.S. equipment on this Mac Victor® Power Network:

1 – Back Office Server, modem, and hub

7 – P.O.S. terminals

11 – Receipt printers



Mac Victor® and Expand Your Power® are registered trademarks of Mac Victor Power

THE BOTTOM LINE IS CASH FLOW PRESERVATION